

RoofwindEN

ROOFWIND

RoofwindEN is a spreadsheet for calculations to the UK National Annex to Eurocode 1 – Actions on structures Part 1-4: General actions – Wind actions, where the orography (topography) is not significant.

Just select the nearest town from a drop down list, enter the height above sea level and distance from the sea (available from Google Earth) and click onto the type of roof to view the results.

Versions are available to calculate wind loads for:

- Roof-based photovoltaic systems
- Single ply fixings
- Composite panel fixings
- Spacer bar bracket centres

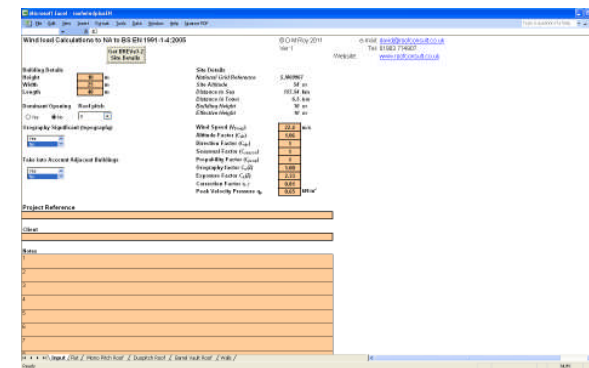
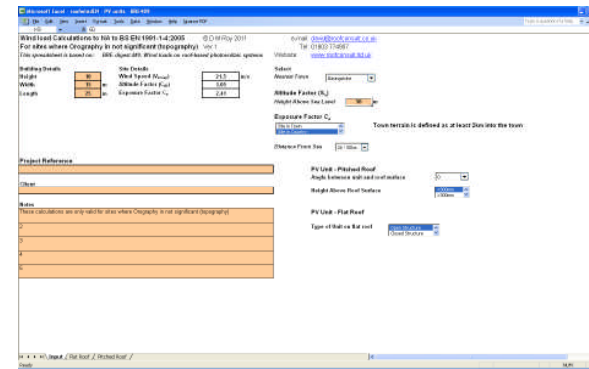
ROOFWINDPLUS

RoofwindPlusEN uses the wind load data program developed by Nick Cook of the BRE (Fastrak BREVe).

From just the National Grid reference of the site, Fastrak BREVe determines the site parameters automatically from extensive databases of ground roughness and altitude for sites in the UK and Ireland, and calculates site exposure to give optimum results.

For more information on Fastrak BREVe please click onto:
<http://www.cscworld.com/Regional/UK/Products/Fastrak/Fastrak-BREVe.aspx>

RoofwindPlusEN can be customised for specific roofing systems



These aids have been developed to help with the use the standard, and are only offered as such. Roofconsult Limited accepts no liability or responsibility whatsoever for any loss or damage suffered by any user of these spreadsheets.

For further information contact David Roy at:
 Roofconsult Limited,
 9 Woodlands Close, Angmering, West Sussex, BN16 4NA
 Tel: 01903 774907 Fax: 01903 774907 E-mail david@roofconsult.co.uk